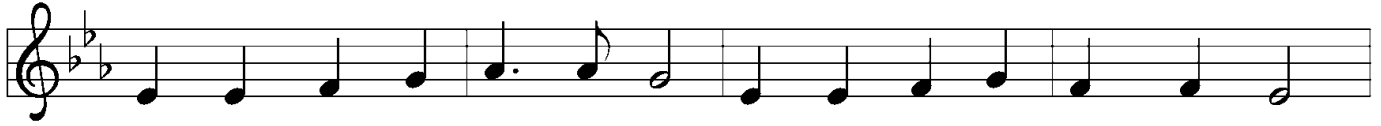


## Go to Dark Gethsemane



1 Go to dark Geth-sem - a - ne, all who feel the tempt - er's pow'r;  
2 Fol - low to the judg-ment hall, view the Lord of life ar - rained;  
3 Cal - v'ry's mourn-ful moun-tain climb; there, a - dor - ing at his feet,  
4 Ear - ly has - ten to the tomb where they laid his breath - less clay;



your Re-deem - er's con - flict see. Watch with him one bit - ter hour;  
oh, the worm-wood and the gall! Oh, the pangs his soul sus-tained!  
mark that mir - a - cle of time, God's own sac - ri - fice com-plete.  
all is sol - i - tude and gloom. Who has tak - en him a - way?



turn not from his griefs a - way; learn from Je - sus Christ to pray.  
Shun not suf - f'ring, shame, or loss; learn from him to bear the cross.  
"It is fin - ished!" hear him cry; learn from Je - sus Christ to die.  
Christ is ris'n! He meets our eyes. Sav - ior, teach us so to rise.

Text: James Montgomery, 1771–1854

Music: GETHSEMANE, Richard Redhead, 1820–1901